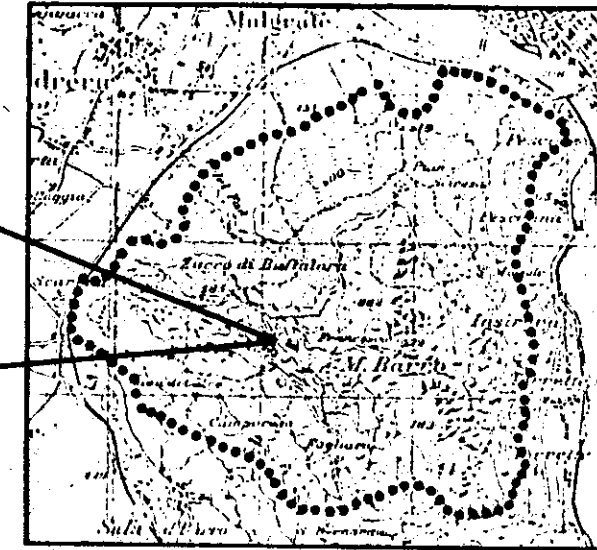


individuazione  
cartografica  
stralcio  
1:1000



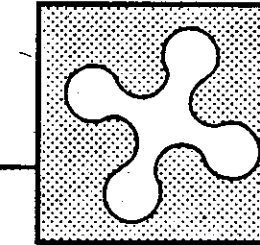
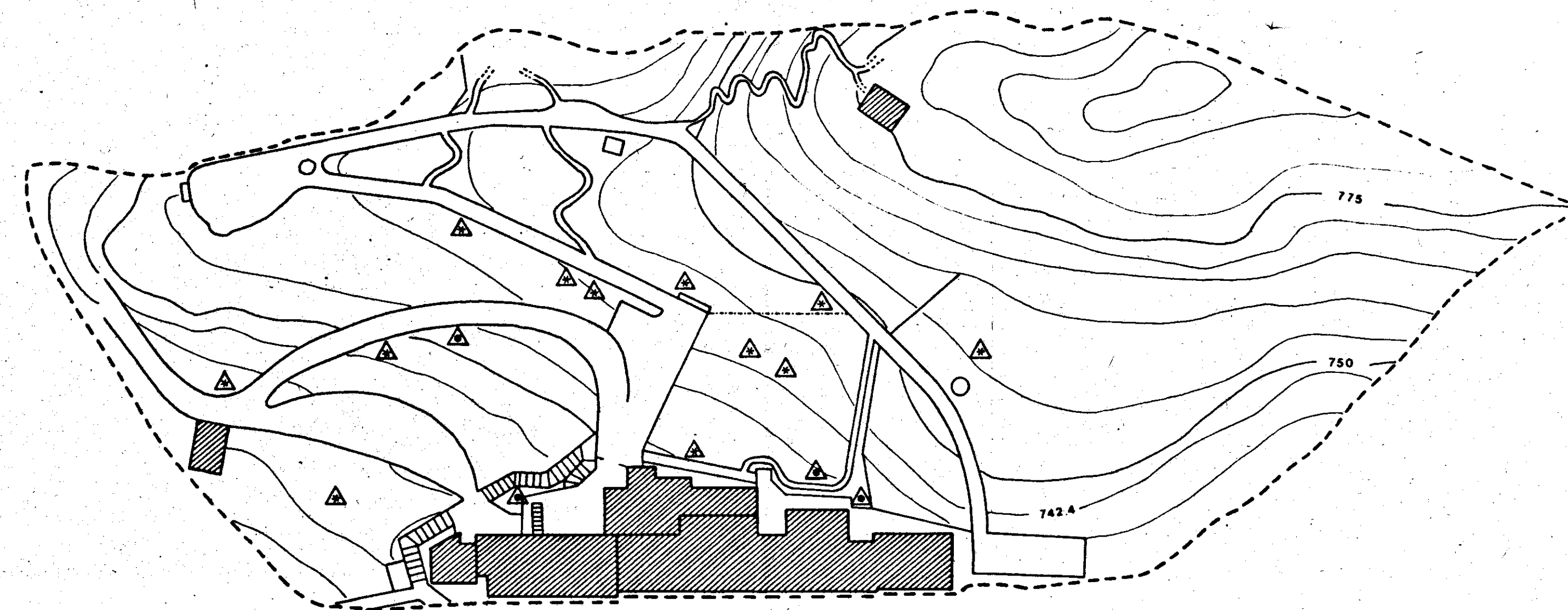
LEGENDA

---  
stralcio in scala 1:1000:  
zona di interesse storico - ambientale  
(art. 20 NTA)

▲  
monumenti naturali  
(art. 24 NTA):

▲  
fagus silvatica

▲  
tilia



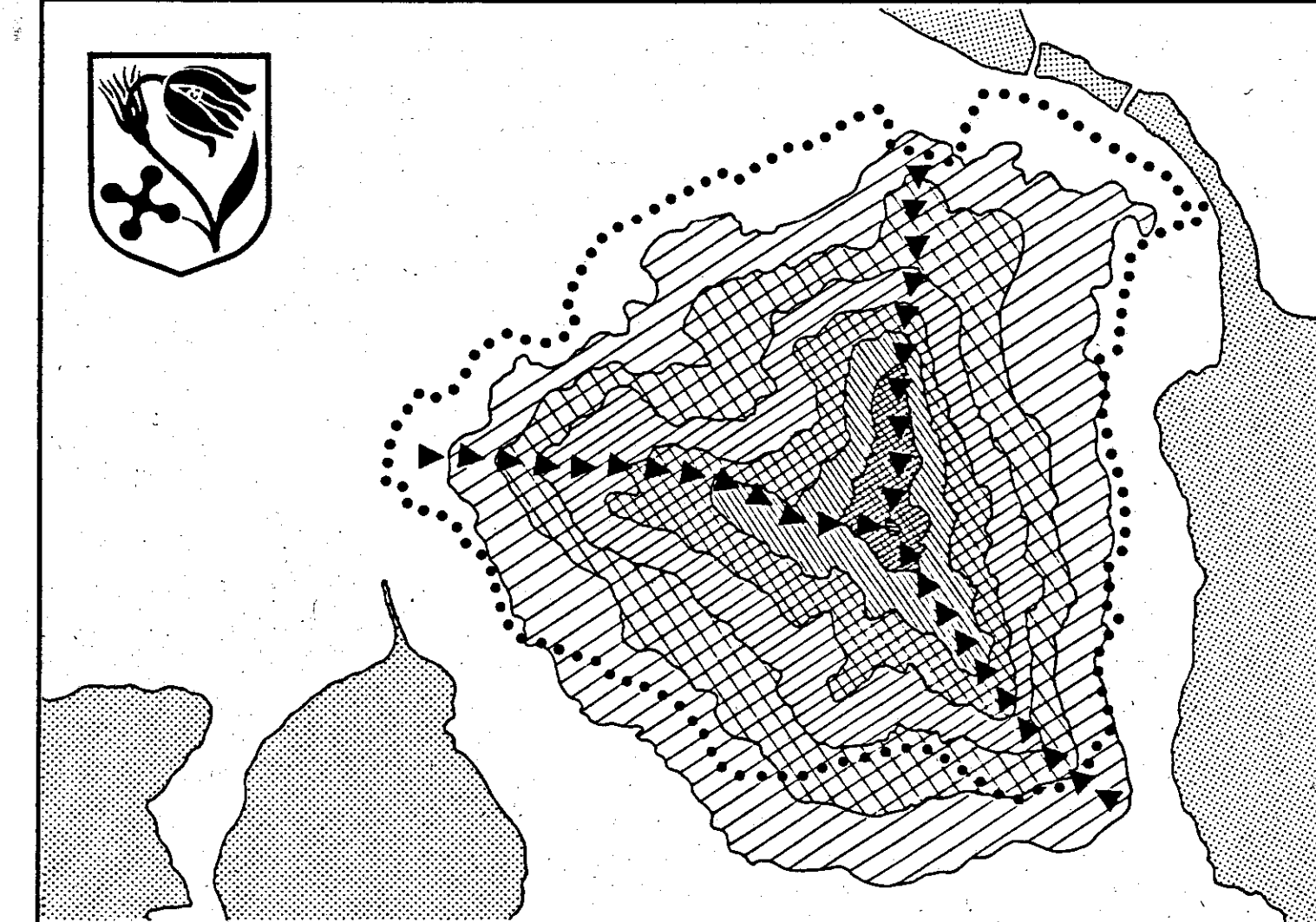
Regione Lombardia

Piano territoriale di coordinamento  
del Parco del Monte Barro

Zonizzazione Eremo

scala 1: 1.000

TAVOLA n. 12



progetto del  
Consorzio Parco del Monte Barro